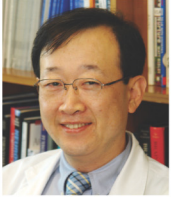


Invited Speakers



Seong Yoon Kim, MD, PhD

- Speaker's affiliation:

Professor, Psychiatry, University of Ulsan Medical College
Chairperson, Department of Psychiatry, Asan Medical Center
Director, Dementia Clinic, Asan Medical Center

- Research interest:

Dementia, Alzheimer's disease, geriatric depression, neuroimaging, clinical drug trials



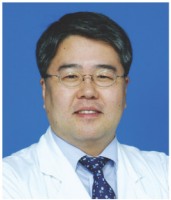
Manami Inoue MD, PhD, SM

- Speaker's affiliation:

Epidemiology and Prevention Division
Research Center for Cancer Prevention and Screening, National Cancer Center, Japan

- Research interest:

Cancer Epidemiology, cohort study, pooled analysis and meta-analysis, cancer registry methodology



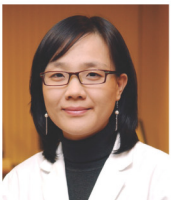
Hojoong Kim, MD, PhD

- Speaker's affiliation:

Director, Clinical Trial Center, Samsung Medical Center
Professor, Sungkyunkwan University School of Medicine

- Research interest:

Clinical Trials, Research Ethics



Juhee Cho, MA, PhD

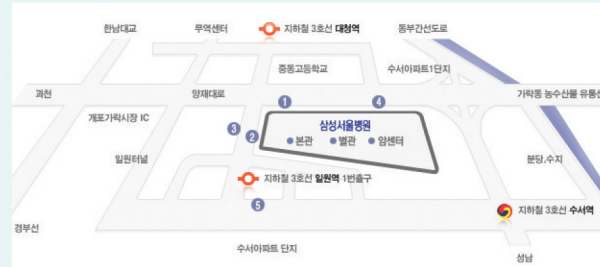
- Speaker's affiliation:

Director, Cancer Education Center, Samsung Comprehensive Cancer Center, Samsung Medical Center, Seoul, Korea
Adjunct Assistant Professor, Departments of Epidemiology and Health, Behavior and Society, Johns Hopkins University
Bloomberg School of Public Health, US

- Research interest:

Cancer epidemiology, survivorship, patient education, epidemiological research methods

| 오시는 길 |



· 고속도로

서울요금소 > 개포가락시정C(약5분) > 양재대로 우측

· 지하철

3호선 일원역 하차 1번 출구 (도보 5분거리, 셔틀버스 6분간격 병행 분관→
암센터(장례식장)→일원역 순환운행)

· 버스

지선버스 : 3011, 4312, 강남06, 3219, 3413, 16, 강남01, 4419

간선버스 : 401, 402, 461

광역버스 : 9407, 9507

사전등록 안내

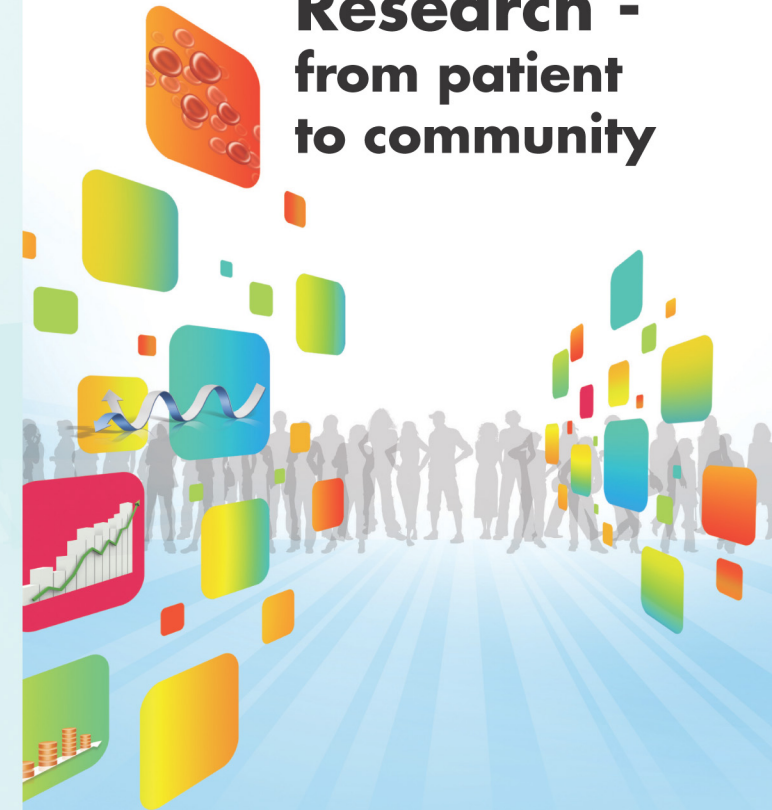
- 사전등록기간 : 1/24(월) ~ 2/15(화)
- 교육비(VAT포함) : 사전등록 70,000원 / 현장등록 100,000원
- 입금계좌 : 신한은행 100-013-184072(예금주 : 삼성서울병원 최한웅)
- 온라인등록 : <http://ncrc.cdc.go.kr>

문의처

- 질병관리본부 담당자 : 김중원(043-719-8673, jwkim80@korea.kr)
- 삼성서울병원 담당자 : 김미정(02-3410-6858, mijung6858@samsung.com)
- 교육비영수증 담당자 : 삼성서울병원 오승근(02-3410-3691, seungeun00.oh@samsung.com)

International Symposium on Future Clinical Research

Translational Research - from patient to community



■ 일시 : 2011년 02월 18일(금) 09:30 ~ 17:30

■ 장소 : 삼성서울병원 대강당(분관 지하1층)

■ 주최 : 질병관리본부 임상연구지원센터, 삼성의료원

■ 후원 : 보건복지부, 한국보건산업진흥원, 근거창출임상연구국가사업단

Invitation

최근 근거중심 의학에 기반한 의료서비스 제공의 중요성이 강조됨에 따라 국제적 임상연구 수준은 나날이 발전하고 있습니다. 현재 우리나라에서도 국민건강증진을 위한 국가 차원의 지원이 이루어짐에 따라 질병중심 임상연구가 활발히 진행되고 있습니다.

이번 심포지움은 "International Symposium on Future Clinical Research: Translational Research-from patient to community" 라는 주제로 준비하였습니다. 국내외 우수한 임상연구 사례를 살펴봄으로써, 향후 임상연구의 추진방향과 경험을 공유하는 유익한 시간이 될 것으로 기대합니다. 또한 국내에서 아직은 초기단계이지만 보건정책결정에 중요한 비교효과연구와 임상연구에 대한 대중의 인식에 대해서도 토론할 수 있는 기회가 될 것입니다.

관심 있으신 연구자 여러분의 많은 참석을 부탁드립니다.

2011년 1월

국립보건연구원장
조명찬

삼성의료원 의과학연구처장
박주배

Program

09:30~10:00	등록	
10:00~10:10	개회사	국립보건연구원장 조명찬
10:10~10:20	축사	삼성의료원장 이종철
Plenary Lecture		
10:20~10:50	Knowledge Dissemination for Better Health	국립보건연구원장 조명찬
10:50~11:10	Coffee Break	
Session I: Future Directions of Clinical Research 좌장 : John Hopkins William W. Eaton		
11:10~11:30	Clinical Research in Korea	국립보건연구원 박현영
11:30~12:10	Population-based Cohort Study for Genome Epidemiological Research in Korea	서울대학교 의과대학 유근영
12:10~12:50	Clinic research for personalized medicine	National Center for Cardiovascular Research Eliseo Guallar
12:50~14:00	Lunch	
Session II: Sharing Experiences in Translational Research 좌장 : 한양대학교 의과대학 배상철		
14:00~14:30	The Life Course Approach to Psychiatric Epidemiology	John Hopkins William W. Eaton
14:30~15:00	Korean Dementia Cohort Study : Overview of CREDOS data	서울아산병원 김성윤
15:00~15:30	Japan Public Health Center-based prospective Study(JPHC Study)	National Cancer Center Manami Inoue
15:30~16:00	Conducting Clinical Trials in Korea	삼성서울병원 김호중
16:00~16:20	Coffee Break	
Session III: Challenges of Translational Research 좌장 : 서울대학교 의과대학 박병주		
16:20~16:50	Comparative Effectiveness Research	National Center for Cardiovascular Research Eliseo Guallar
16:50~17:20	Public Attitudes towards Clinical Research	삼성서울병원 조주희
17:20	폐회	

Invited Speakers



Myeong-Chan Cho, MD, PhD

- **Speaker's affiliation:**
Director General, Korea National Institute of Health
Professor, Department of Cardiology, Chungbuk National University Hospital
- **Research interest:**
Molecular Mechanism of Cardiac Hypertrophy and Heart Failure, Molecular Therapy for Cardiovascular Diseases



Hyun-Young Park, MD, PhD

- **Speaker's affiliation:**
Director, Division of Cardiovascular & Rare Disease, Department of Biomedical Science, National Institute of Health, Korea Centers for Disease Control and Prevention
Director, National Clinical Research Coordination Center, Department of Biomedical Science, National Institute of Health, Korea Centers for Disease Control and Prevention
- **Research interest:** Cardiovascular diseases epidemiology, Genetics, and Cardiovascular biology



Keun-Young Yoo, MD, PhD

- **Speaker's affiliation:**
Professor of Epidemiology, Seoul National University College of Medicine
Honorary President, National Cancer Center
Secretary General, Asian Pacific Organization for Cancer Prevention (APOCP)
- **Research interest:** Genome cohort study, breast cancer & stomach cancer epidemiology, cancer prevention policy



Eliseo Guallar, MD, DrPH

- **Speaker's affiliation:**
Director, Area of Cardiovascular Epidemiology and Population Genetics, National Center for Cardiovascular Research (CNIC), Madrid, Spain
Associate Professor, Departments of Epidemiology and Medicine, Johns Hopkins University Bloomberg School of Public Health, US
- **Research interest:** Cardiovascular disease epidemiology, epidemiological research methods.



William W. Eaton, PhD

- **Speaker's affiliation:**
Professor, Department of Mental Health, Johns Hopkins University Bloomberg School of Public Health, US
- **Research interest:**
Psychiatric epidemiology, mental disorders and mortality, autoimmune diseases and psychosis in Denmark, risks for transitions in drug Use in urban adults